



Statistical and Applied Mathematical Sciences Institute (SAMSI) 19 T.W. Alexander Dr. RTP, NC 27709

Opportunities At SAMSI

Sujit K. Ghosh
Deputy Director

Statistical and Applied Mathematical Sciences Institute

WHAT IS SAMSI?

- ✧ One of 8 NSF funded Math institutes
- ✧ A NSF grant

Awarded to Duke, NCState, UNC and NISS



MISSION OF SAMSI

- Forge a synthesis of the **statistical** sciences and the **applied mathematical** sciences
- with **disciplinary** science
- to confront the very hardest and most important **data- and model-driven** scientific challenges

WHAT CAN SAMSI DO FOR YOU?

✧ Research

Year-long programs

Summer programs

Topical workshops

✧ Education and Outreach

Graduate student modeling workshop

Undergraduate workshops

Workshops on Promoting Diversity

Research Activities

- Working Groups
- SAMSI Courses, Seminars and Colloquia
- Summer School (for some programs)
- Workshops (mid-program, summer)
- Personnel include long-term visitors, postdocs, faculty fellows, graduate students, remote WG participants

Education & Outreach Activities

- **Undergraduate level**
 - Summer: *Modeling Workshop (5 days)*
 - Fall & Spring: *Outreach Workshops (1.5 days)*
- **Graduate level**
 - Summer: *Industrial Mathematical & Statistical Modeling (IMSM) Workshop (10 days)*
 - Fall & Spring: *Research Program Courses, Working Groups and Poster Day/Reception*
- **Promote Diversity in Math Sciences**
 - *Math Institute Diversity Initiatives*
 - *Annual and Biennial Workshops (MMW, SOWW, etc.)*

ONGOING AND UPCOMING YEARLONG RESEARCH PROGRAMS

2015-16

- **Challenges in Computational Neuroscience**
- **Statistics and Applied Mathematics in Forensic Science**

2016-17

- **Optimization** (www.samsi.info/opt)
(Opening workshop: August 29 – September 2, 2016)
- **Statistical, Mathematical and Computational Methods for Astronomy** (www.samsi.info/astro)
(Opening workshop: August 22-26, 2016)



Call for proposals for workshops and research programs at SAMSI

The Statistical and Applied Mathematical Sciences Institute (SAMSI) invites proposals for:

- Short programs and workshops for academic years and summers starting from 2017
- Yearlong programs for the academic years 2018-19 and beyond

Proposals should address topics of current research interest in statistics, applied mathematics, or interdisciplinary applications.

For information on submitting proposals, see: <http://www.samsi.info/proposals>

Deadline for submissions is October 15, 2016

Upcoming SAMSI Programs

2016-17 Optimization

2016-17 Statistical, Mathematical and Computational Methods for Astronomy

2017-18 Mathematical and Statistical Methods for Climate and the Earth System

2017-18 Quasi-Monte Carlo and High-Dimensional Sampling Methods for Applied Mathematics

Visit <http://www.samsi.info/programs> for more information on current and past programs

*Contact us at SAMSI, P.O. Box 14006, Research Triangle Park, NC 27709
919-685-9350, proposals@samsi.info.*



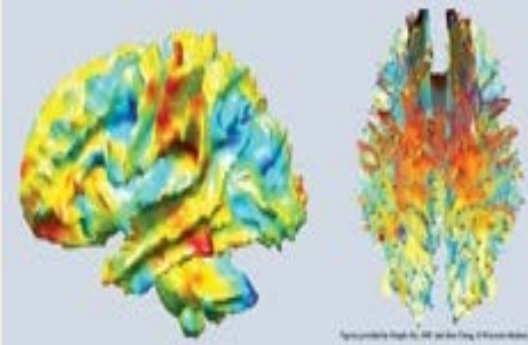
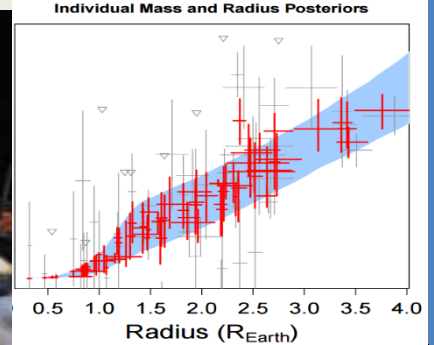


Figure 1.1: Density and temperature profiles of a star.



Enjoy The Workshop

Come Visit Us Again

www.samsi.info